



LEARN AT HOME (LAH): TRANSITION SUPPORT PROGRAM

Chilliwack School District - Partners in Learning!



K-12 Schools are in				
Remote learning for all	Remote learning with exceptions	In-class & remote learning	Learning groups: full-time in-class	Learning as usual: full-time in-class
Stage 5	Stage 4	Stage 3	Stage 2	Stage 1

Alternatives to Full-Time In-Class Instruction Include:

- Online/Distributed Learning – options offered through an online learning center using BC curriculum and under the supervision of a BC certified teacher with the support from a home facilitator.
- Homeschooling – options offered with a home facilitator who is responsible for planning and delivering the educational program.
- Homebound Education – services provided when students are absent from class because of injury, illness, surgery etc. Accessed through your school's school based team.





The [BC Education Restart Plan](#), states that “*having students in the classroom helps to minimize learning gaps, and provide the academic, social and emotional supports essential for learning*”. The **Chilliwack School District** strongly supports In-class instruction as the preferred method for most students.

The Chilliwack School District will provide the following options as potential pathways for some students:



Learn at Home: Transition Support Program

Kindergarten to Grade 12



Hybrid Program

Elementary / Middle



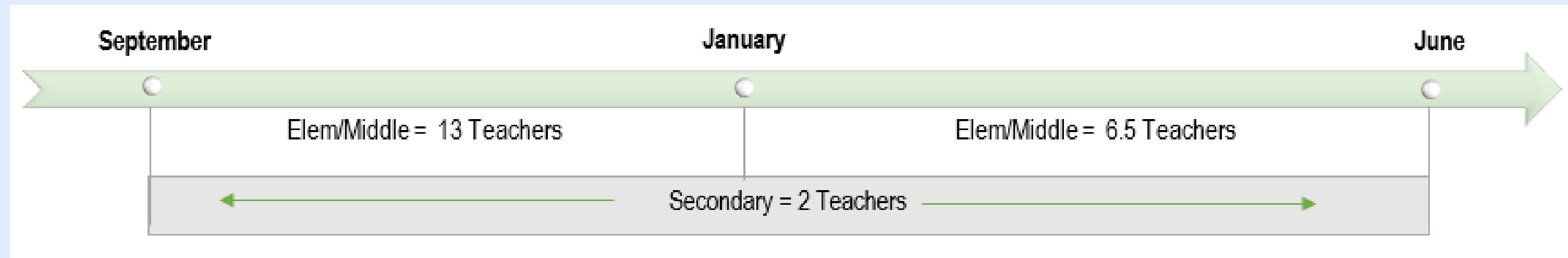
First Nations on Reserve Support

Kindergarten to Grade 12

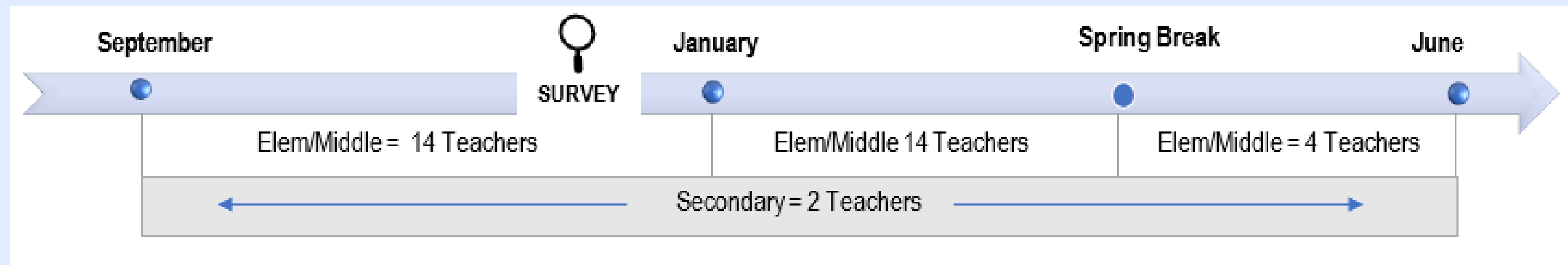




Original Planning from September 2020



Revisions made in December 2020 based on Survey Results





Learn At Home: Transition Support Program Elementary / Middle

Duration: Temporary support for students who are not attending their catchment school in person (COVID related reasons).

Supports:

- A teacher supports key learning areas of literacy and numeracy.
- The student remains connected to their school of record and classroom.
- Students are supported remotely with the assistance of a LAH Teacher assigned by the District.
- The LAH Teacher connects with students periodically throughout the week.

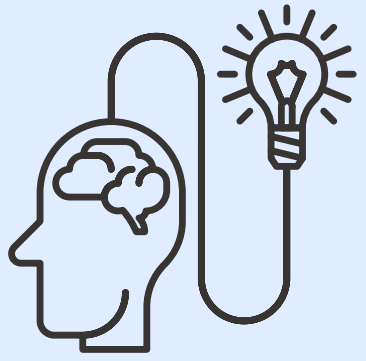


PROGRAM EXTENDED

LAH: Transition Support Survey

- LAH families were surveyed
- The program was extended in it's current form until Spring Break
- In order for families to have time to plan for transition, families were notified of the extension and new timeline in early December.





NEXT STEPS

Learn at Home: Transition Support Moving Toward Spring Break



School P/VP/Case Manager connects with LAH Families (in early Feb.) to understand return needs.



Literacy / Numeracy assessments are administered for all LAH Students.



Transition to In-Person School of Record can happen at any point between now and Spring Break.



Student(s) return to In-Person Instruction at School of Record.



Student continues to be supported remotely by the School of Record.



HOW IS MY SCHOOL GOING TO SUPPORT?

Hearing from our schools...



Elementary School

Principal: Mr. Brad Driscoll



Middle School

Principal: Mrs. Danielle Wicker



What about Students with IEP's?

District Vice Principal: Mrs.
Jessica Adams-Louporet





SUPPORTING REMOTE LEARNERS IN SD33

Connection First

- Relationship: listen to student/family story, context and wishes
- Together: explore ways to support transition to in-person learning
- Supportive: develop mutual transition plan to in-person learning
- Personalize: if student is not returning to in-person learning at this time, we will continue to support remotely



SUPPORTING REMOTE LEARNERS IN SD33

School Context

School based teacher maintains student and family connection

- Teachers are not expected to teach in two environments
- Support of the numeracy / literacy curriculum will be provided (notes, links or assignments – provided in ways that work for families...online and paper based)
- Regular progress monitoring through check-ins by school staff (teachers, School Based Team members)
- Schools determine how to support student learning. Possibilities include: Tutorial/Support/Connect sessions at scheduled times
- Designated staff connect with students/families (to answer questions and provide support)
- Connection with First Nations On-Reserve Support continues