

Stitó:s

Lá:lém totí:lt

Elementary / Middle School

Public Presentation

February 2021

Opening: Fall 2022



Chilliwack
School District

D.G.S.
Construction

thinkspace

Stitó:s Lá:lém totí:lt (Stee-tahs Lah-lem tot-ilt) *was built with a focus on **interdisciplinary collaboration** through paired classrooms; taking advantage of the **natural surroundings** by infusing the spirit of **hands on learning** through a formal makerspace and built in break out spaces for each paired classroom.*

With dedicated community classroom, gymnasium and outdoor synthetic playing fields, our new school will be the heart of community learning, culture and activity.



**Chilliwack
School District**



1

Project Information

Stitó:s Information

- New state of the art K to 8 school
- Design-build delivery
- 850 elementary/middle + 80 kindergarten
- Neighbourhood Learning Centre space (NLC)
- Two gymnasiums (NLC and school)
- Artificial turf sports field and field house
- Dedicated bus drop-off area
- Nature play and outdoor learning area





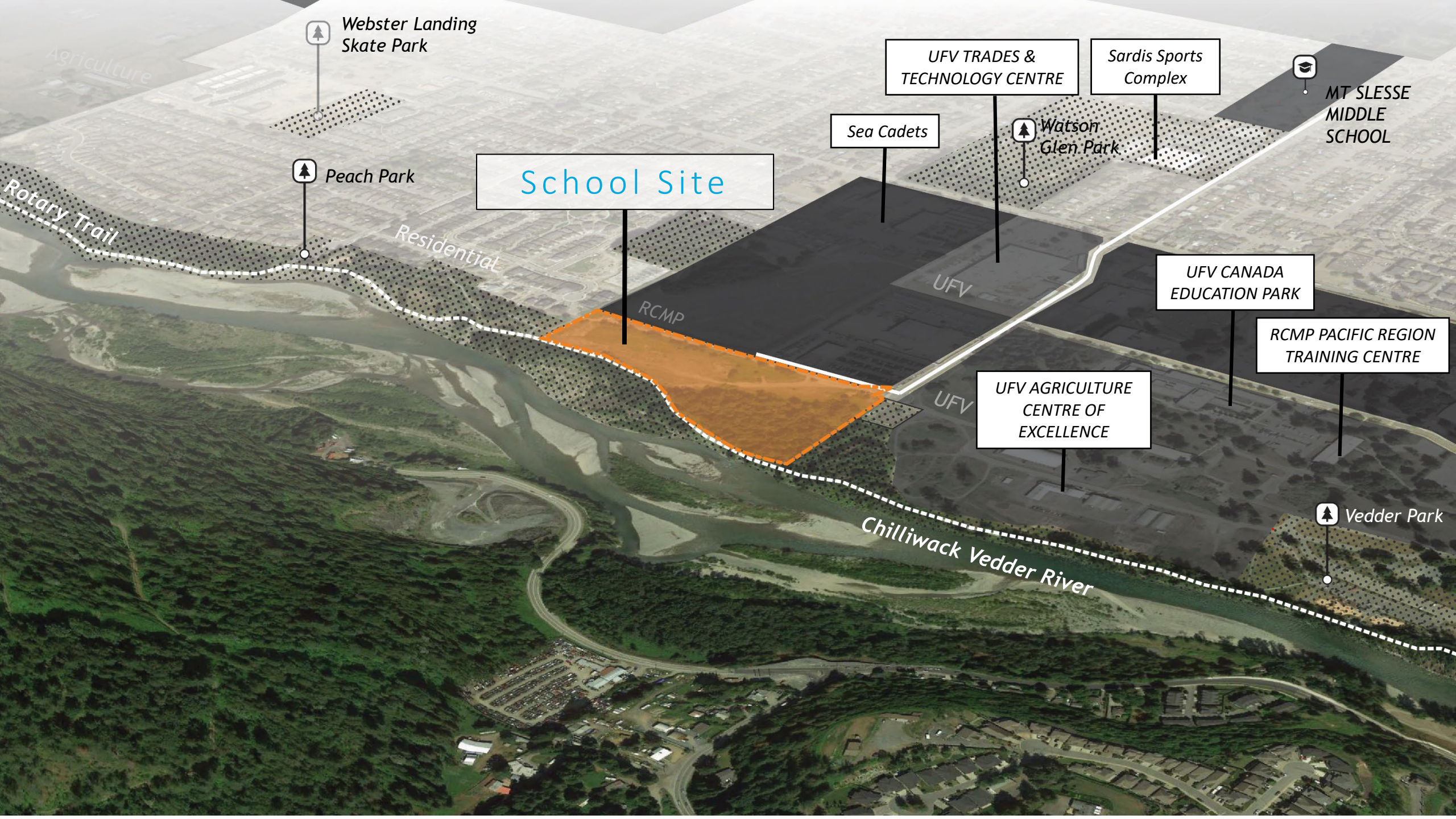
School Site

Rotary Trail

Petawawa Road

Tyson Road

Chilliwack Vedder River



Webster Landing
Skate Park

Peach Park

School Site

Sea Cadets

UFV TRADES &
TECHNOLOGY CENTRE

Sardis Sports
Complex

MT SLESSE
MIDDLE
SCHOOL

UFV CANADA
EDUCATION PARK

RCMP PACIFIC REGION
TRAINING CENTRE

UFV AGRICULTURE
CENTRE OF
EXCELLENCE

Vedder Park

Agriculture

Residential

RCMP

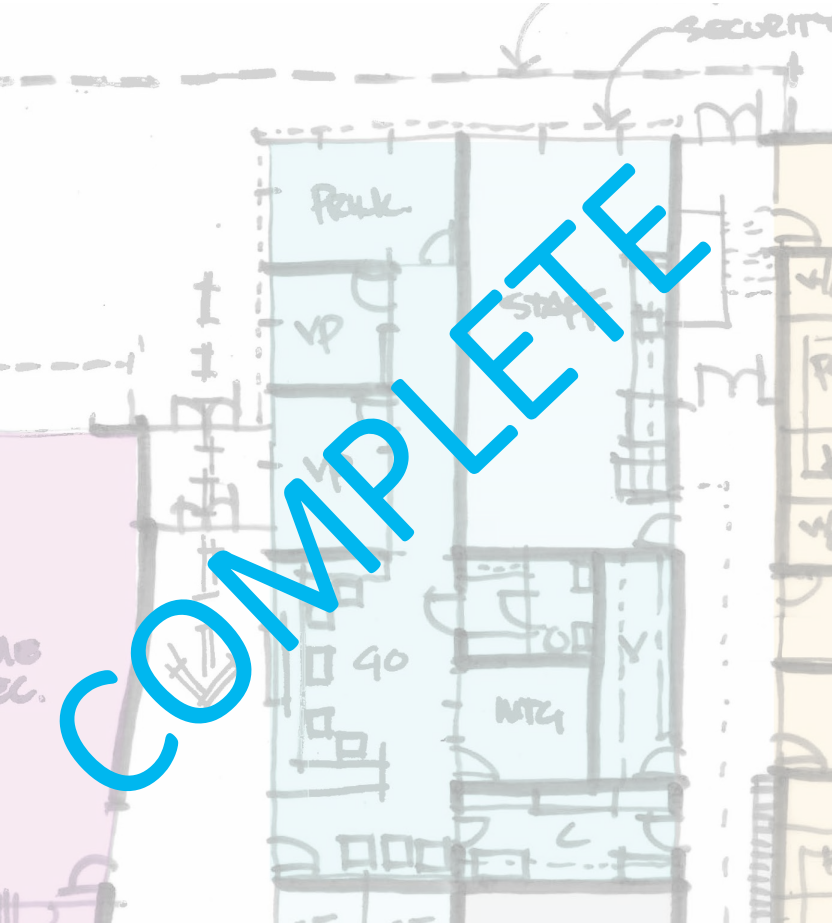
UFV

UFV

Chilliwack Vedder River

Rotary Trail

Project Schedule



Design

100% Design Complete
October 2020



Build

Construction Complete
June 2022



Learn

School Opening
Fall 2022



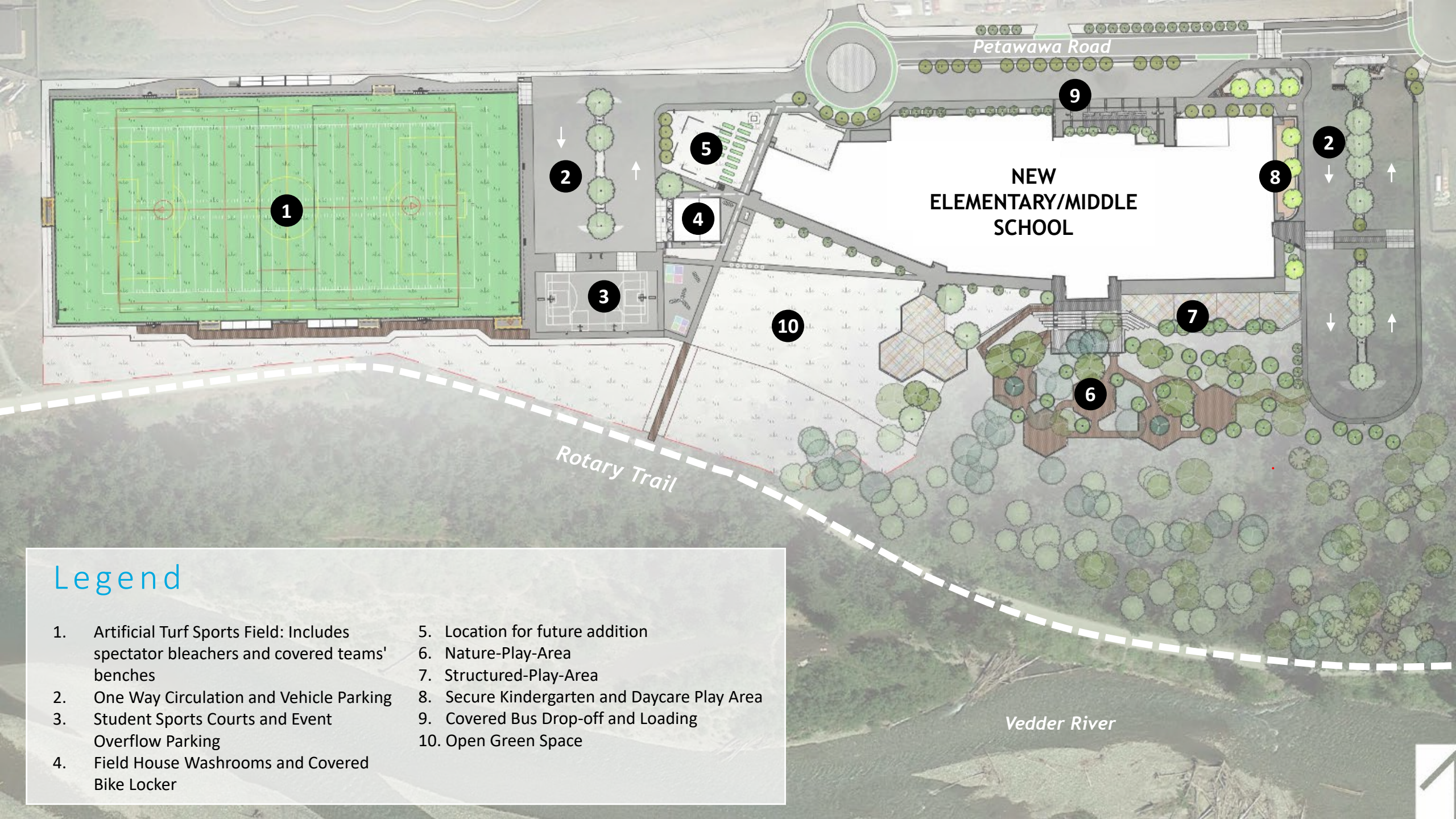
2

Site Development



Rendering

Aerial View From South-East



Legend

- | | |
|--|--|
| 1. Artificial Turf Sports Field: Includes spectator bleachers and covered teams' benches | 5. Location for future addition |
| 2. One Way Circulation and Vehicle Parking | 6. Nature-Play-Area |
| 3. Student Sports Courts and Event Overflow Parking | 7. Structured-Play-Area |
| 4. Field House Washrooms and Covered Bike Locker | 8. Secure Kindergarten and Daycare Play Area |
| | 9. Covered Bus Drop-off and Loading |
| | 10. Open Green Space |

Rendering

Aerial View From North-East



3

Building



Sustainability + Energy Efficiency Features

Indoor Air Quality

Integrative Design Process

Open Space

Responsible Sourcing

Alternative Transportation

Planting

Water Reduction

Acoustic Performance

High Priority Site

Life Cycle Analysis

Energy Performance

Design with Nature

Water + Energy Metering

Low Emitting Materials

Construction Pollution Prevention

Enhanced Commissioning

Construction Waste Management

Main Floor

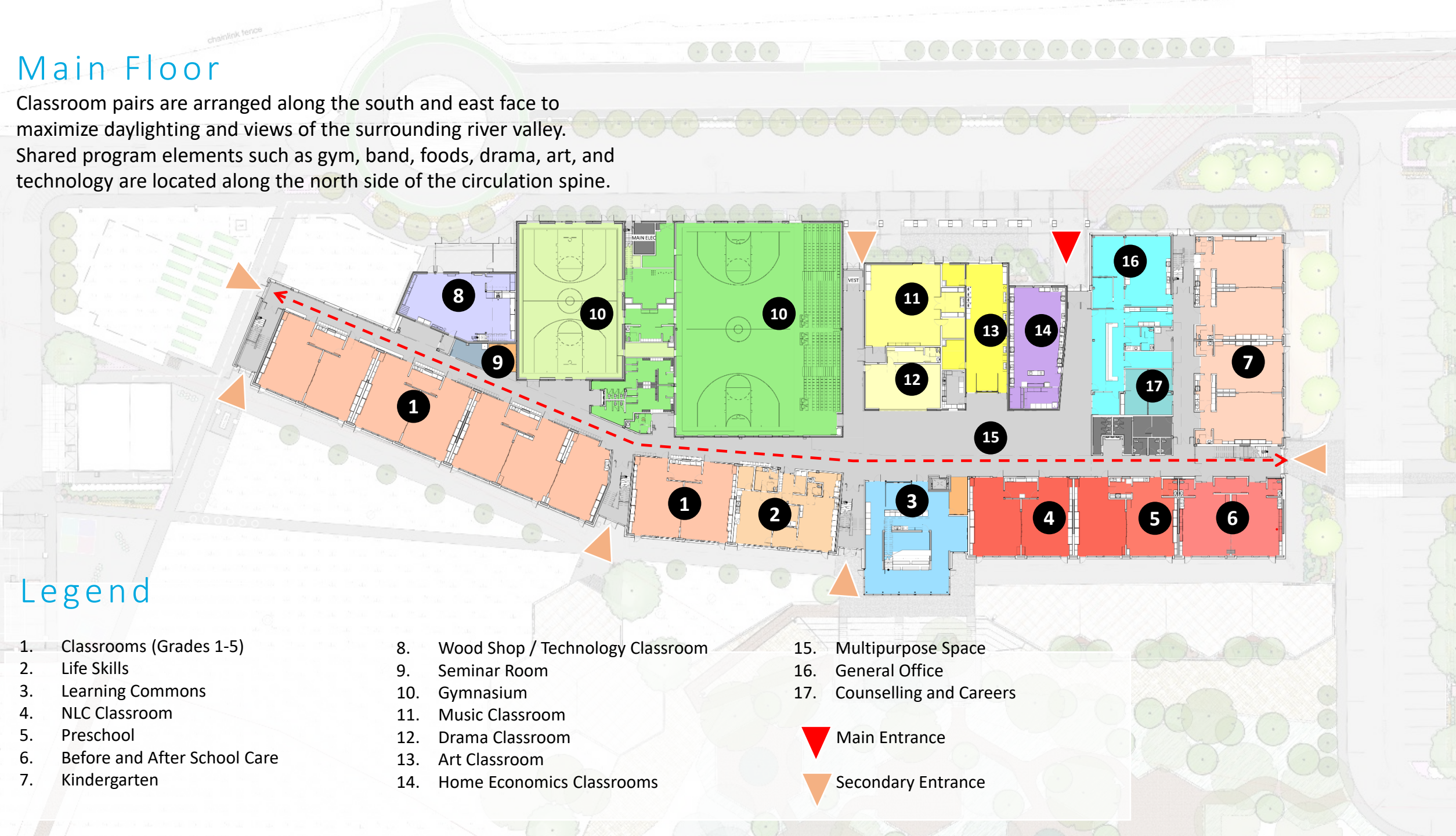
Classroom pairs are arranged along the south and east face to maximize daylighting and views of the surrounding river valley. Shared program elements such as gym, band, foods, drama, art, and technology are located along the north side of the circulation spine.

Legend

- | | | |
|---------------------------------|-------------------------------------|-----------------------------|
| 1. Classrooms (Grades 1-5) | 8. Wood Shop / Technology Classroom | 15. Multipurpose Space |
| 2. Life Skills | 9. Seminar Room | 16. General Office |
| 3. Learning Commons | 10. Gymnasium | 17. Counselling and Careers |
| 4. NLC Classroom | 11. Music Classroom | |
| 5. Preschool | 12. Drama Classroom | |
| 6. Before and After School Care | 13. Art Classroom | |
| 7. Kindergarten | 14. Home Economics Classrooms | |

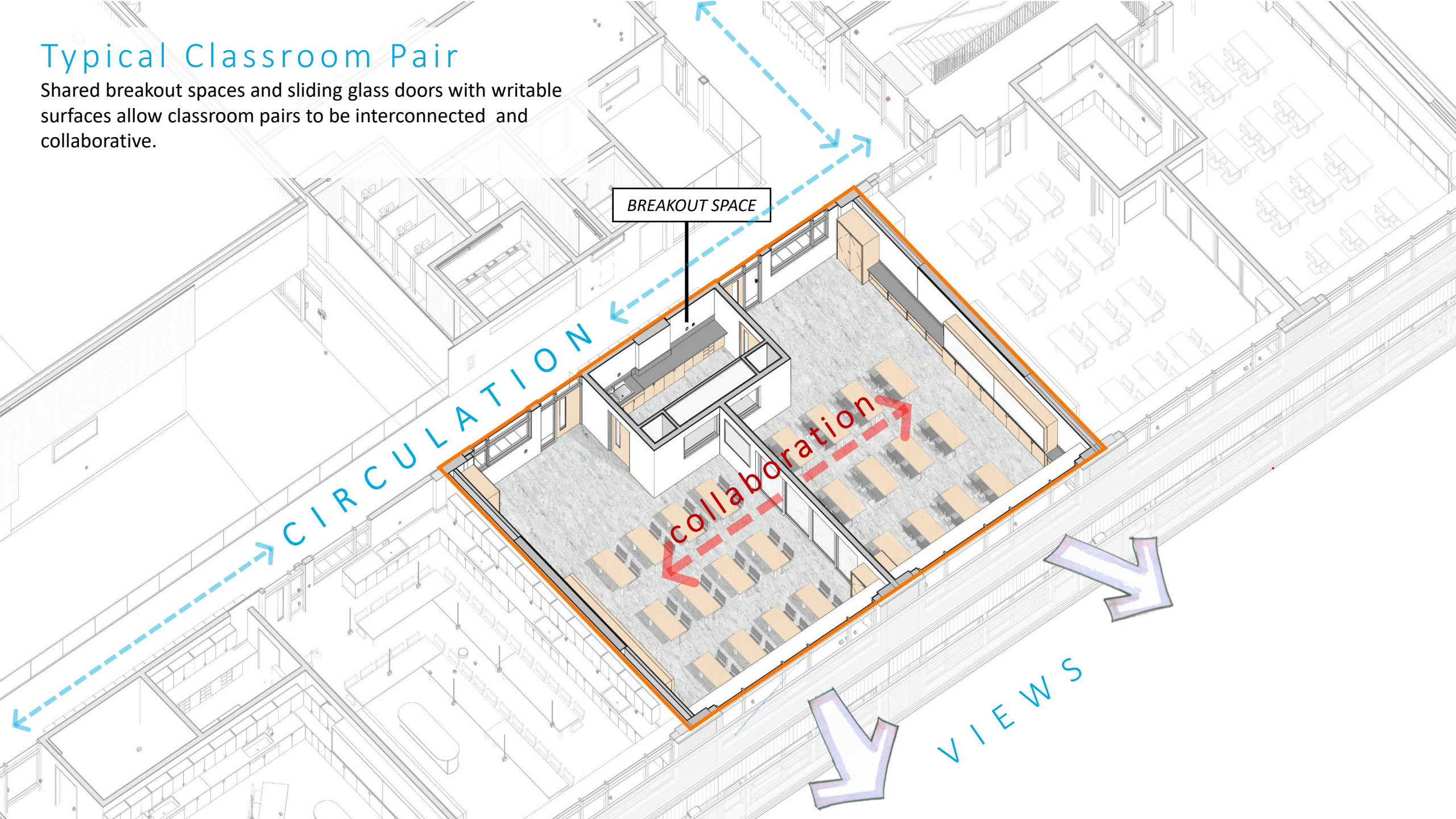
▼ Main Entrance

▼ Secondary Entrance



Typical Classroom Pair

Shared breakout spaces and sliding glass doors with writable surfaces allow classroom pairs to be interconnected and collaborative.

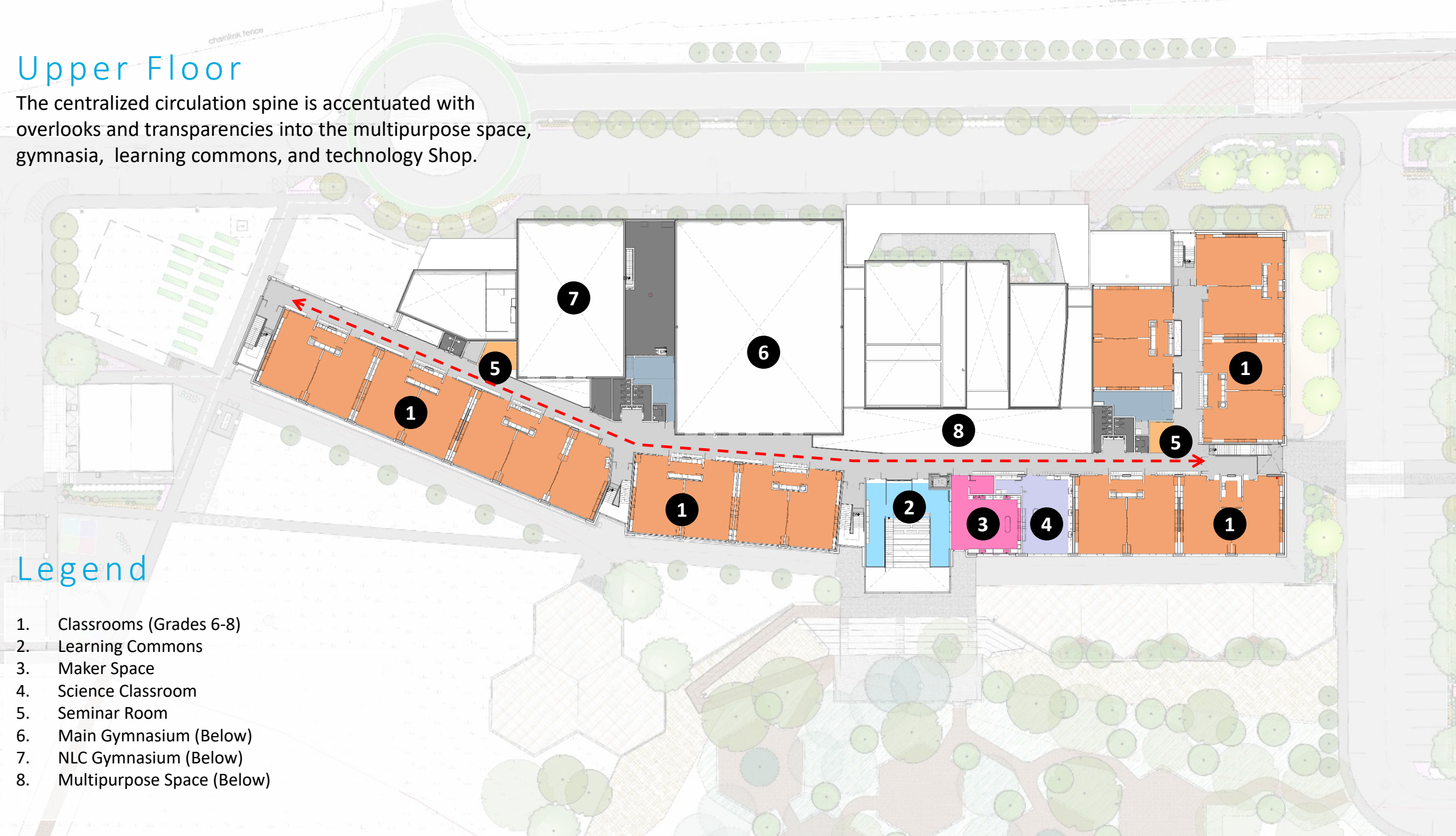


Upper Floor

The centralized circulation spine is accentuated with overlooks and transparencies into the multipurpose space, gymnasias, learning commons, and technology Shop.

Legend

- 1. Classrooms (Grades 6-8)
- 2. Learning Commons
- 3. Maker Space
- 4. Science Classroom
- 5. Seminar Room
- 6. Main Gymnasium (Below)
- 7. NLC Gymnasium (Below)
- 8. Multipurpose Space (Below)



Building Cross Section at Learning Commons



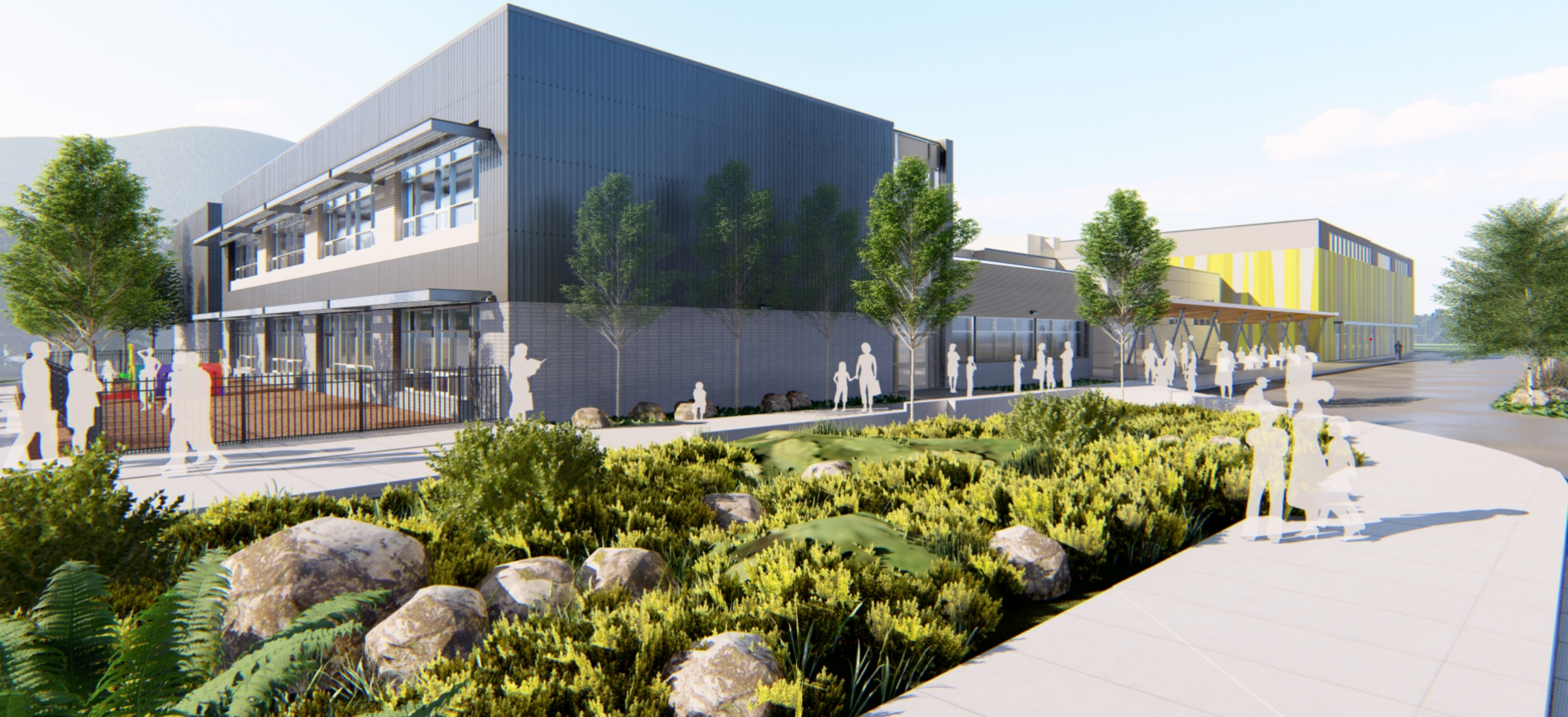
Field House

The field house provides washroom facilities for after hours and weekend events. An integrated bike locker enclosure provides secure bike storage for students and staff.



North Approach

Main Entrance To The School



Nature Play and Outdoor Learning

Nature play is a learning process engaging children in working together to develop physical skills, exercise their imaginations, stimulate poetic expression, and begin to understand the workings of the world around them.

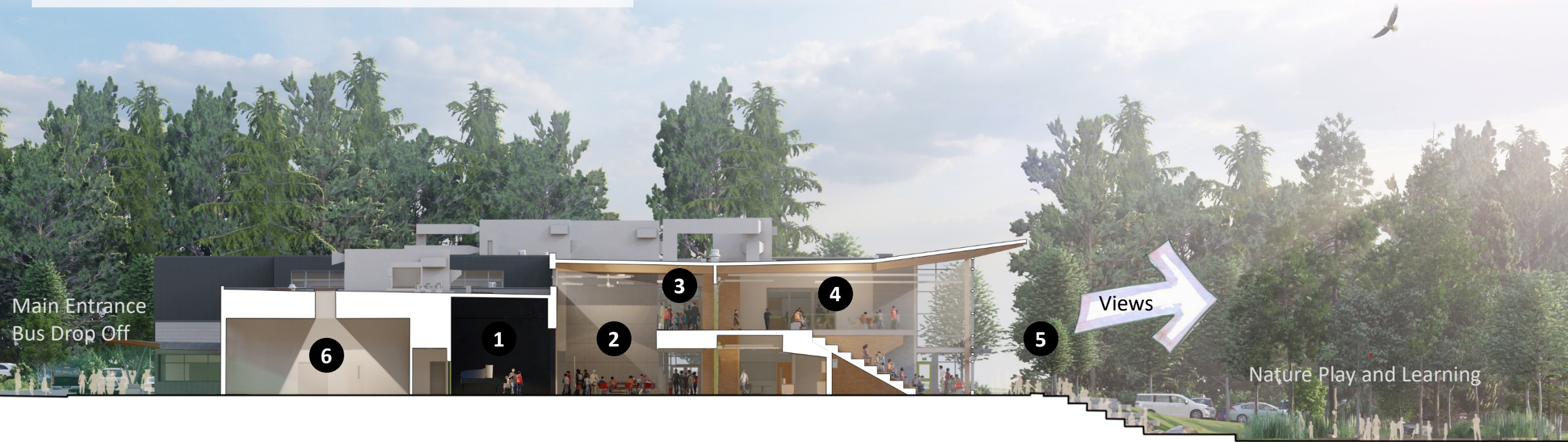


South Classrooms Block

Circulation stairs are accentuated with a calming sky and water color pallet to contrast against the south monochromatic exterior.



Building Cross Section At Learning Commons

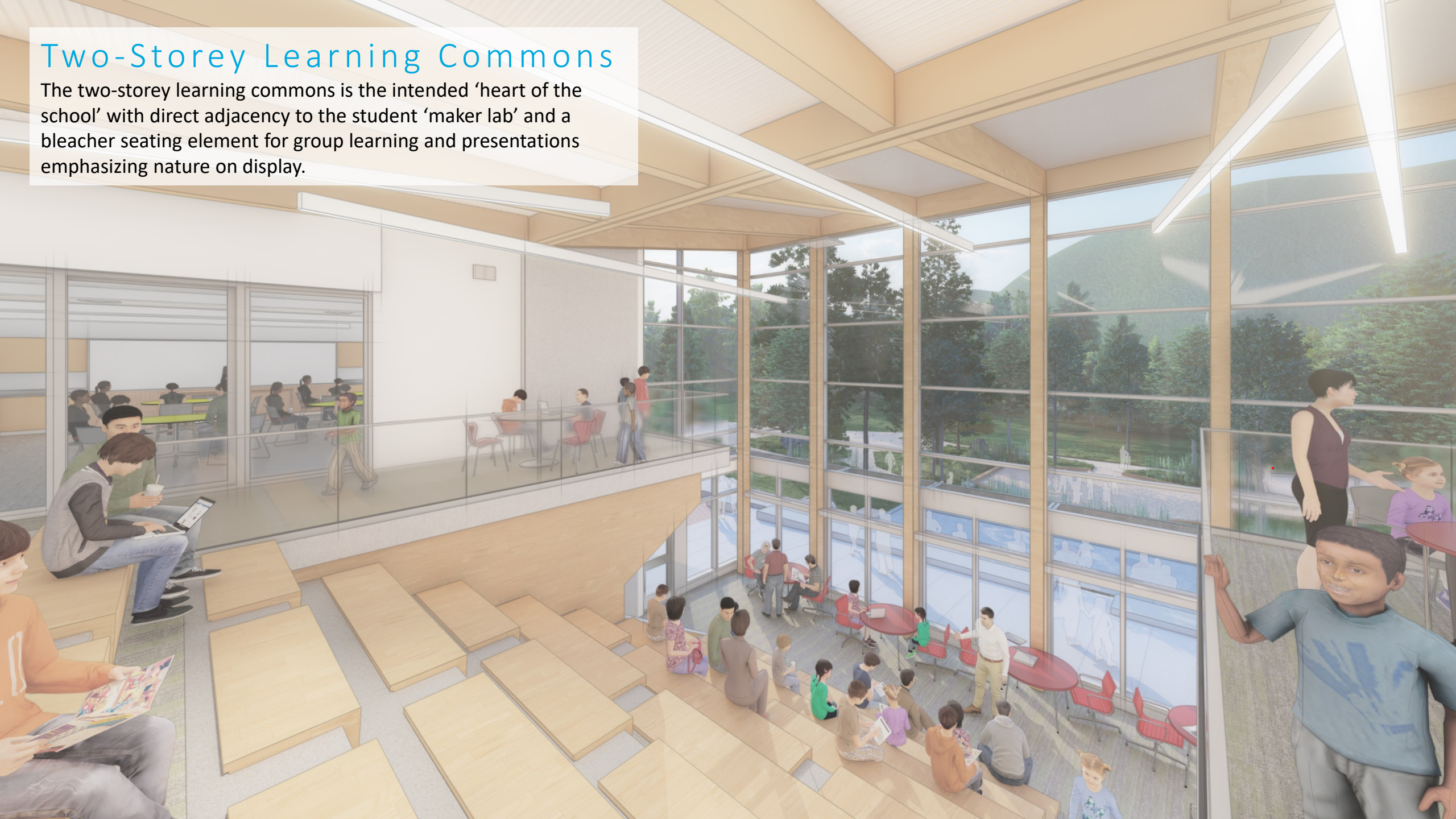


Legend

- | | |
|-----------------------|-----------------------------|
| 1. Drama Classroom | 4. Learning Commons |
| 2. Multipurpose Space | 5. Exterior Gathering Space |
| 3. Corridor | 6. Band and Choral room |

Two-Storey Learning Commons

The two-storey learning commons is the intended 'heart of the school' with direct adjacency to the student 'maker lab' and a bleacher seating element for group learning and presentations emphasizing nature on display.



Two-Storey Learning Commons

The roof is supported with exposed wood glulam beams reaching outward providing a warm color palette, while functioning structurally to mitigate direct sun and maximize views of the surrounding hills and large trees.



Multipurpose Space

The multipurpose space is the 'social hub' of the school. Its centralized location is directly adjacent to the performance drama space, learning commons, art room and neighbourhood-of- learning spaces.



Gymnasia

Daylighting strategies enhance the function and beauty of the gymnasium for students, athletes and spectators. The location of the gymnasium spaces further enhances the school's interior circulation with transparent glazing and views, and a site inspired interior mural that weaves throughout the school's circulation space.



An architectural site plan for Stitó:s Elementary / Middle School. The plan shows a large rectangular building footprint in the center, surrounded by parking lots, walkways, and landscaping including trees and shrubs. A circular feature is visible in the upper left corner. The text is overlaid on the central building area.

Stitó:s

Lá:lém totí:lt
Elementary / Middle School

Opening: Fall 2022



Chilliwack
School District

D.G.S.
Construction

thinkspace