



**Chilliwack  
School District**

WHAT  
**YOU**  
NEED  
TO  
KNOW

# **School Trustee Candidate Information Session**

**September 12, 2018**

# Thinking of Becoming a Board Trustee?

## Agenda

- ▶ About our District
- ▶ Eligibility
- ▶ Board/Ministry of Education Relationship
- ▶ Purpose of the Board
- ▶ Specific Duties of the Board
- ▶ Role of an Individual Trustee
- ▶ What's Next?
- ▶ Questions?

## Our Mission

Every student a graduate prepared for opportunities beyond graduation...

## Our Motto

“Partners in Learning”

## We believe...

- that student literacy, academic achievement and social development are fundamental to everything we do.
- in a safe, caring, equitable, accountable and collaborative learning and working environment.

# Strategic Plan 2016-2021



Our Strategic Plan sets priorities and defines the path of our school district. It serves as the framework to guide the planning and decision making throughout the district. This 5 year plan is focused on the priorities and goals around:

- ▶ Instruction
- ▶ Community and Culture
- ▶ Social Emotional Wellness
- ▶ Resources

<https://stratplan.sd33.bc.ca/>

# Schools and Students

There are approximately 14,000 students at 30 sites

- 19 Elementary Schools
- 5 Middle Schools
- 1 Elementary/Middle School
- 3 Secondary Schools
- 1 Alternate Education School
- 1 Distance Learning and Continuing Education School

7 of these sites are Neighbourhood Learning/Community school sites

- Central Elementary
- Chilliwack Secondary
- Cultus Lake Elementary
- Greendale Elementary
- Promontory Elementary
- Rosedale Elem/Middle
- Yarrow Elementary

## District Staff



The District employs approximately 1,800 staff members.

Here are a few examples:

- 900 Teachers
- 97 Principals & Vice-Principals, Executive and Management
- 70 Custodians
- 37 Bus Drivers
- 102 Clerical
- 357 Education Assistants
- 56 Maintenance Staff

## Other Information

- ▶ We have an total budget of \$153 million
- ▶ Our schools are significantly over capacity (currently using 93 portables)
- ▶ On March 7, 2017, the Board of Education approved the reconfiguration of schools with the exception of Rosedale Traditional remaining as K – 8:
  - Elementary – Kindergarten to Grade 5
  - Middle – Grade 6 to Grade 8
  - Secondary – Grade 9 to Grade 12



# You are eligible to become a Trustee if you are:

- An individual who is, or will be on general voting day, age 18 or older
- A Canadian citizen
- A resident of British Columbia for at least six months
- Not disqualified under the School Act or any other enactment from being nominated for, elected to or holding office as trustee, or be otherwise disqualified by law





# Boards of Education & the Ministry of Education:

- ▶ Share a co-governance relationship with the provincial government and the Ministry of Education (MoE)
- ▶ MoE sets the general direction for K-12 education including curriculum, funding and legal framework
- ▶ Boards are responsible for overseeing school districts based on the general direction of the MoE and the educational aspirations of their local community
- ▶ Respective responsibilities of the MoE and boards of education are described in the School Act

# General Powers and Duties of the Board

The Board of Education is a representative body elected to provide for and oversee the operation of the schools in the Chilliwack School District. The Board considers its most important functions are the responsibility and obligation to:

1. Set a vision, strategic direction and guidelines for student achievement.
2. Develop policy that governs the operation of the School District.
3. Select a Superintendent to whom it delegates the authority for overseeing the implementation of its policies.
4. Adopt an annual budget.



# Governance Principles

1. The Board is a corporate board and speaks with one voice.
2. The Board establishes long-term vision and provides clear direction through policy to indicate action and monitors results.
3. The Board is responsible for the ‘what’ not the ‘how’.
4. The Superintendent is the single official link to the Board. Accountability for the day-to-day operations of the district is delegated to the Superintendent.
5. The Board represents the community, makes decisions with the good of the whole district in mind and is accountable to the community.
6. The Board will operate in an open and transparent manner for its public.



# Code of Ethics

1. Listen.
2. Respect the opinion of others.
3. Recognize the integrity of my predecessors and associates and the merit of their work.
4. Make no disparaging remarks, in or out of the Board meetings, about other members of the Board or their opinions.
5. Express my honest and most thoughtful opinions frankly in Board meetings.
6. Participate fully in Board action.
7. Abide by majority decisions of the Board.
8. Respect the confidential business of the Board.

## Code of Ethics – continued

9. Consider myself a trustee of public education and will do my best to protect it, conserve it and advance it; giving to the children of my community educational facilities that are as complete and adequate as possible.
10. Consider it an important responsibility of the Board to interpret the school district aims, methods and attitudes to the community.
11. Earnestly try to interpret the needs and attitudes of the community.
12. Attempt to procure adequate financial support for the district.
13. Represent the entire District rather than individual electors, patrons, or groups.
14. Not use the schools or any part of the school program for my own personal advantage or for the advantage of my friends or supporters.

# Specific Duties of the Board

- ▶ Setting local policy for the effective and efficient operation of schools.

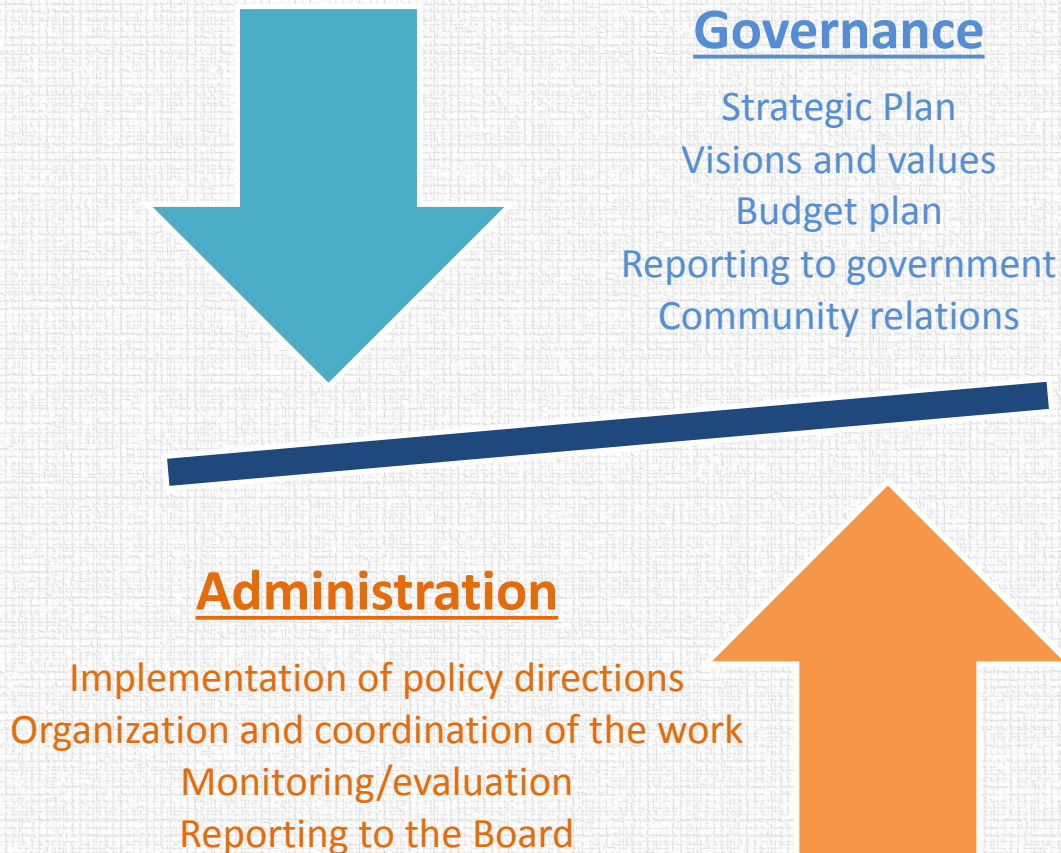
Some examples include:

- Establishing a local school calendar and making decisions about scheduling breaks and professional development days.
  - Determining educational programming for students in the district. Establishment of schools of choice (i.e., specialty schools within the public school system)
  - Policies such as Transportation Bussing Fees
- ▶ Employing the staff necessary for school district operations

## Specific Duties of the Board – continued

- ▶ Establishing conditions of employment for employees
- ▶ Monitor and approve the school district's operating budget and capital plan
- ▶ Hearing appeals from parents and students where staff decisions significantly affect the education, health or safety of students

# A Framework for Mutual Leadership





# What does a School Trustee do?

A trustee's role is to maintain a focus on student achievement and well-being and participate in making decisions that benefit the entire district while representing the interests of their community

Trustees:

- ✓ Establish the district's strategic direction;
- ✓ are financial stewards;
- ✓ are part of a team;
- ✓ are community leaders; and
- ✓ as a Board, are employers.



*A trustee's power lies in being a member of the board; individual trustees in and of themselves, do not have this authority*

# What is the Commitment/Remuneration?

- There are 7 Trustees on the Board elected for a 4 year term.
- The Board Chair and Vice-Chair have greater responsibilities and work closely with the Superintendent and Secretary Treasurer.

- Commitments:**
- ✓ 16 Board meetings per year
  - ✓ Committee/PAC/BCSTA meetings
  - ✓ Representation and liaison to schools/organizations
  - ✓ Responding to calls, emails or meeting requests
  - ✓ Other commitments such as school district events, preparation for meetings, etc.

- Remuneration:**
- ✓ Ranges from \$19,293 to \$21,223
  - ✓ Travel expenses/Pro-D/Phone & Internet

## Can I do this?

Trustee candidates do not need to have a background in public education, however, some of the following skills and experience would be an asset:

- ❖ Understanding of official meeting procedures and school district governance policies
- ❖ Awareness of the legal, political and legislative parameters in which school boards operate
- ❖ Financial literacy
- ❖ Willingness to learn



# Key Election Dates

Event	Date
Nomination Period	Sep 4 - 14
Candidate Nomination Withdrawal Deadline	Sep 21
Campaign Period	Sep 22 - Oct 20
Required Advance Voting	Oct 10
Election Day – General Voting	Oct 20
Declaration of Official Results	Oct 24
Judicial Recount Period	Oct 24 - 29
Oath of Office – Board meeting	Nov 6

## How Do I Begin?

- The Trustee election is organized for the School District by the **City of Chilliwack** and coincides with the election for Mayor and Councillors.
- Important election information, nomination packages and links to other key documents can be found on the City's website: [Elections - City of Chilliwack](#)

For more information, contact:

- ▶ Carol Friesen, Chief Election Officer (City of Chilliwack)  
Ph: 604.793.2934 or by email: [friesen@chilliwack.com](mailto:friesen@chilliwack.com)
- ▶ Gerry Slykhuis, Secretary Treasurer (SD#33 Chilliwack)  
604.798.2962 or by email: [gerry\\_slykhuis@sd33.bc.ca](mailto:gerry_slykhuis@sd33.bc.ca)



*Questions ?*