



# CROSSING THE ROAD SAFELY

## PARENTS:

Please review this safety brochure with your child if they cross the road to get on or off a school bus

## KINDERGARTEN STUDENTS

\*Parents must walk the student to and from the school bus door.

**School District #33  
(Chilliwack)**



*"Partners in Learning"*  
[www.sd33.bc.ca](http://www.sd33.bc.ca)

## ALWAYS USE THE HAND RAIL

Teach your children to use the handrail when entering or exiting the school bus to prevent falling.

Holding on to the handrail also gives the student leverage to pull themselves back into the school bus if traffic is passing on the right side.



*The safe transportation of students is everyone's concern. It requires cooperation among students, parents, drivers and teachers.*

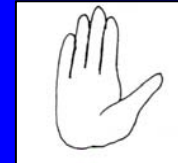
## QUESTIONS ? CALL:

The School Bus Safety Officer  
**@ 604-792-1255**

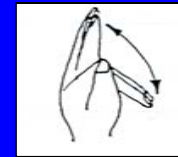
## DRIVER'S HAND SIGNALS

For students who must cross the road

1. During the **morning** pick-up, the driver will give the following hand signals out the driver's side window

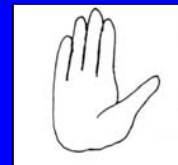


**WAIT**, traffic approaching

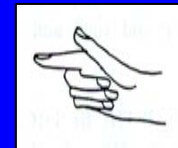


**CROSS** the road and get on the bus.

2. During the **afternoon** drop-off, the driver will give the following hand signals through the windshield



**WAIT**, traffic is approaching



**CROSS** the road and go home

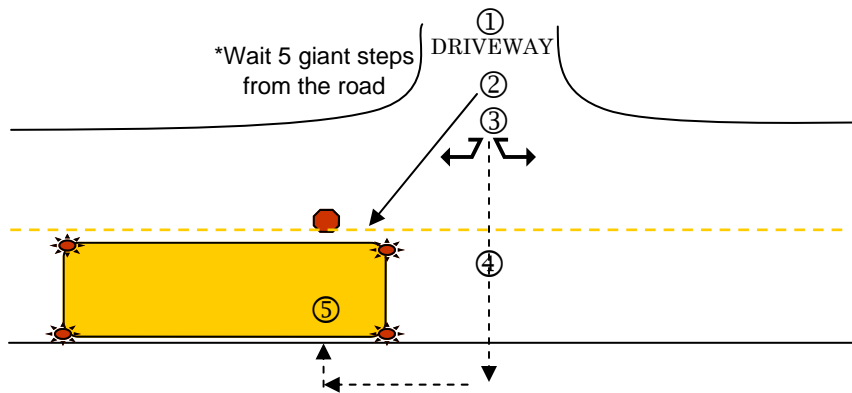



The large **AMBER** alternating flashing lights warn motorists that the school bus is about to stop to either load or unload students.

The large **RED** alternating flashing lights warn motorists to **STOP** as the school bus is either loading or unloading students.



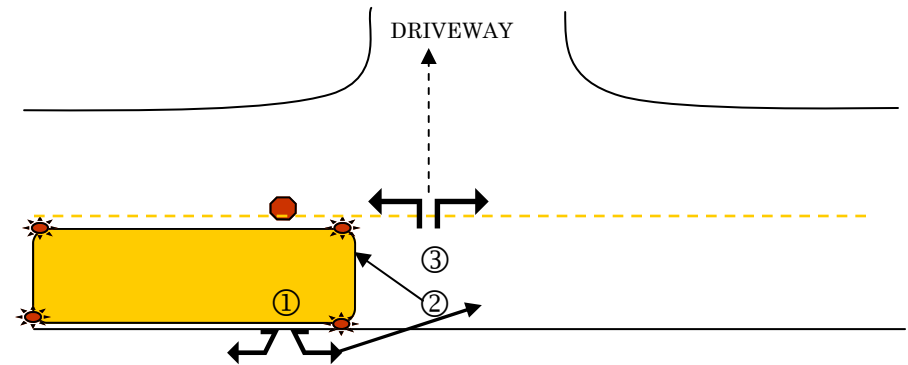
## GETTING **ON** THE SCHOOL BUS




- ① Wait until the bus stops and the large **RED** alternating, flashing **LIGHTS** and **STOP SIGN** are out and **FLASHING**.
- ② Watch the bus driver and wait for hand signal to  cross the road.
- ③ When the driver signals to cross, **LOOK** both ways and when **SAFE** walk (don't run) across the road.
- ④ Walk far enough out in front of the bus to see the driver's head and shoulders. This also means the driver can see you.
- ⑤ Get on the bus quickly and sit down.

**STUDENTS ARE NOT PERMITTED TO CROSS THE ROAD PRIOR TO THE ARRIVAL OF THE SCHOOL BUS.**

## GETTING **OFF** THE SCHOOL BUS



- ① When you get to the door, check to the rear for approaching cars or bicycles. then check the area to the front of the bus for approaching traffic. If safe, get off the bus.
- ② Walk out in front of the bus far enough to see the driver. **STOP** and **WAIT** for the drivers signal to **CROSS**.
- ③ When the driver signals to cross, **LOOK** both ways and when **SAFE** walk (don't run) across the road. 

**CROSSING BEHIND THE SCHOOL BUS IS DANGEROUS AND IS NOT PERMITTED**

**IF YOU HEAR THE BUS HORN, QUICKLY MOVE BACK TO THE SIDE OF THE ROAD YOU CAME FROM!**

This means a car or truck is approaching and may not stop. Again, wait for the driver's signal to cross.